

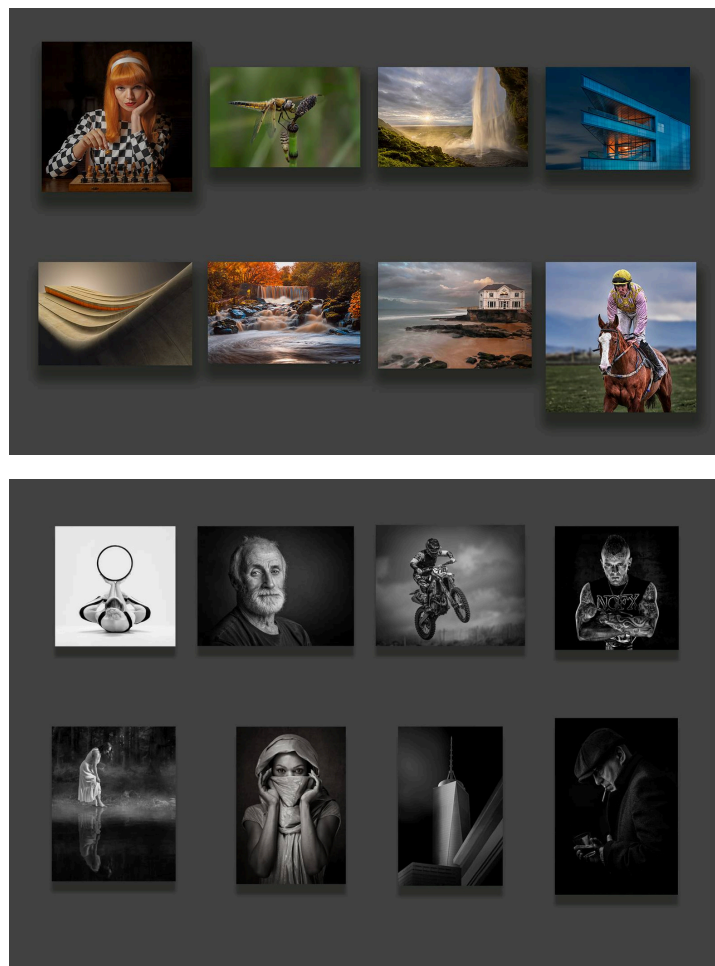
IRISH PHOTOGRAPHIC FEDERATION



Sponsored by:

NATIONAL SHIELD CLUB PHOTOGRAPHY COMPETITION

HANDBOOK 2025



CATCHLIGHT CAMERA CLUB COLOUR AND MONO PANELS
OVERALL WINNERS NATIONAL SHIELD 2024

Table of Contents

	<i>Page</i>
<u>1 INTRODUCTION</u>	<i>02</i>
<u>2 THE COMPETITION</u>	<i>03</i>
<u>3 ENTERING THE COMPETITION</u>	<i>06</i>
<u>4 JUDGING</u>	<i>09</i>
<u>5 GENERAL</u>	<i>10</i>
<u>6 CALENDAR & SCHEDULE</u>	<i>16</i>

1. Introduction

Welcome to the 2025 IPF National Shield Competition Handbook which will guide you through the rules and process for entering. The judging of the National Shield will be live.

This is one of the most important competitions that the Irish Photographic Federation organises each year because it gives up-and-coming photographers the opportunity to show the quality of the images that they are producing and printing.

It is a pleasure to view the high-quality images produced by the members of our affiliated Clubs. The standard is raised every year, and if last year is anything to go by, we are in for a real treat again this year.

The event is being hosted by Drogheda Photographic Club and is made possible by the voluntary work of IPF Council and club members. Without them it would not be possible to host such a successful event. I want to thank Sheamus O'Donoghue who organised the medals, trophies and certificates. Thanks also to our President, Ita Hegarty for developing the handbook, and to Ita and Suzanne Behan, our National Secretary for establishing and maintaining the entry portal and operating the IPF competition software on the day.

Thanks to Brian Deering for organising the transport of the stands from Kilkenny and to Brian Byrne for transporting them after the event to their new home in Carrickmacross. Thanks to Aida Best, our National Treasurer for looking after the finances. A special word of thanks to my fellow members of Drogheda Photographic Club for being available to help out.

Thanks to our experienced judges: Anne Cassidy, FIPF, FRPS, Judith Kimber MPAGB, ARPS and Richie Hatch, AIPF.

We are delighted that CEWE are once again sponsoring the National Shield. CEWE are sponsoring the trophies and providing CEWE credit vouchers for the winning club as well as the individual award winners in both the colour and mono sections.

Looking forward to seeing you all in Drogheda for an enjoyable day and in the meantime, keep taking and printing photos.

John Butler, FIPF, ARPS
National Shield Co-ordinator



2. The Competition

Encouraging the highest standards in Irish photography

Introduction

The National Shield is open to all clubs affiliated to the IPF and take place in the **Barbican Centre, Drogheda on November 15th 2025.**

- The winning clubs (first, second and third) will receive an IPF trophy and certificate. The first placed club will also receive 8 x €100 CEWE credit vouchers.
- The first, second and third place mono and colour panels will each receive an IPF trophy and certificate.
- The first, second and third placed individual winners will receive IPF medals and there will be two HMs per category.
- The winning individual images in colour and mono will receive CEWE credit vouchers of €250, €150 and €100 respectively for first, second and third placed images.

The competition is open to non-advanced photographers but permits images from two advanced photographers per panel provided the only criteria that makes them advanced is that they are Licentiates, i.e., category (a) below. Advanced photographers are defined by the IPF, for the purpose of this competition as:

- (a) photographers who have received an IPF distinction or similar, i.e., FIAP, PSA, RPS or any other distinctions;
- (b) photographers who have been awarded more than one IPF medal in IPF national competitions;
- (c) photographers who have produced image(s) that have represented the IPF in international competitions;
- (d) photographers who have received an acceptance or acceptances with five or more image titles, or one or more awards, including a ribbon, in FIAP and/or PSA recognized salons.
- (e) photographers whose club considers them to be of advanced standard in any disciplines of photography (e.g., monochrome print, colour print, projected image, AV etc.);
- (f) photographers who, in the opinion of the IPF, are of advanced standard.

3. Photographers who qualify as advanced under any of the categories (b) to (f) are not eligible to enter.

The Competition Continued...

The Competition

Competition Format

- The National Shield is a print competition presented as two individual panels of eight images, one monochrome and one colour.
- Clubs may compete in one or two of the categories of monochrome print and/or colour print.
- Of the eight images submitted for each panel, only one image per author is allowed
- Only two images per panels will be permitted from Licentiate holders, who should not qualify under any of the other definitions of advanced.
- Licentiate-holders are not mandatory; a panel may be submitted by eight non-advanced photographers.
- The National Shield will be awarded to the club with the highest aggregate total score across the two categories.

General Rules

- Images entered in the competition must be the work of the stated author and must have originated in-camera according to international competition rules.
- Where the IPF requests proof of authorship, such proof shall be provided without delay.
- No person may represent more than one club in this competition.
- Images used in any previous National Shield competitions can not be used in the current competition.
- Infringement of any of the rules or principles of fairness may cause the relevant image and panel to be disqualified.
- A club can not use the same image in more than one panel.
- Completion of the online entry system form constitutes acceptance of the rules of the competition.
- It is incumbent on all participating clubs to ensure that they have adhered to the rules of the competition and all rules will be enforced on the basis that all competing clubs and club members have taken full cognisance of the rules.
- Monochrome & colour images must conform to current FIAP specifications.

The Competition

General Rules

- All IPF competitions are judged on photographic ability. For this reason, AI-generated images, whether wholly or partially generated, are not allowed and will not be awarded marks in any IPF competition.
- In IPF competitions for individuals, entrants must confirm that their images do not include any partially or wholly AI generated elements. In inter-club competitions each club must confirm that none of the images in the club's panel have been wholly or partially generated by AI.
- By entering an IPF competition, club members agree to:
 1. Treat judges, organisers, volunteers, and fellow entrants with courtesy and respect.
 2. Accept that judges' decisions are final and must not be challenged during or after judging.
 3. Raise any concerns only with the Competition Coordinator after judging has fully concluded.
 4. Refrain from gossip, accusations, or personal remarks about officials or competitors.
 5. Understand that disruptive behaviour may result in warning, disqualification, or removal from the competition.
- Objections or complaints relating to an entry, an entrant or a panel, must be made in writing by the club secretary or a member of the IPF Council. Objections from any other source shall not be entertained under any circumstance.
- The objection must state clearly, in writing, the reasons for the objection and must be accompanied by an investigation fee of €50. If the objection is deemed valid, the IPF will refund the investigation fee.

3. Entering the Competition



Online Competition Management System

- Club entries must be made via the IPF online competition management system at: <https://ipfhost.org/main/main.php>. The system must be used to enter digital copies of each of your printed images to allow scoring on the digital competition system. The digital image will not be used for scoring purposes, it is the printed image that will be judged and scored accordingly. There is no other entry system or process. Printed images are presented on the day.
- However, you should pay attention to the quality, finishing and layout of the digital images and panel as it is these images that will be used in the digital booklet and social media.
- A club officer (or other assigned member) will upload all the individual images for the club. It is advised to gather these images from the individual members exported in the format set out below in the digital image upload section.
- Club officers who are previous users of the competition management system do not need to register again. Login using the email and password that you previously used. Once logged in you can update your email in the 'edit details' section, if it has changed.
- Club officers who are first time users of the digital competition system are required to register on this site in advance of entering images. It is advised to register and ensure your account is up and running in a separate session from your image upload session. This is the same competition system that has been used for the previous National Photography Competition and National Nature and Wildlife Competition, so you may well be registered already.
- Once you enter the competition system, you select the '**competitions**' tab and select competitions for e.g., 'Galway Camera Club'. This differs from individual competitions where you select your own name.
- Please select National Shield 2025.
- Once in the entry area, you will see two sections, one for colour and one for monochrome.
- You will enter the first name of author number 1 and the system will offer you a drop down list if this author is already registered on the system with your club from previous individual competitions. If s/he is not already registered, just continue with the author's first and surname and the system will automatically register him/her on the system.



3. Entering the Competition

- Please enter your 8 individual entries in order. The 9th entry should be your panel layout. For the 9th entry, assign an author from your club who has not already been entered as an author from 1–8. The 9th image will not be judged and is for display purposes only.
- Entry fees must be paid by PayPal to complete your entry. There is no other payment method available.
- Fees: The entry fee is €70.
- The system allows you to print labels with a barcode that you must place on the relevant physical image prior to presentation of your panel (details below in the printed image section).
- If you do not receive notification by email within a few minutes, your entry is not complete, please check that all is in order and try again.
- If you have issues with the entry system, use the 'contact us' button on the top right of the system's page. The competition team will revert ASAP, keeping in mind that support is supplied by volunteers.

Digital Image Preparation and Upload

- Please export digital images in the sRGB colour space for upload. This version should not be used to print your images as you should print from the the best quality files, preferably in a photography colour space.
- Individual images should be a maximum of 2,016 KB (2.0 MB)
- Images must be sized correctly in order to be accepted by the online system. Images must be a maximum 1,600 pixels wide and 1,600 pixels high. They may be smaller on either side.
- These digital uploads are not being judged. Do not place any identifying marks or watermarks on the image, however, as the administration team will see the digital image on their computer screen during judging.
- The 9th image or panel layout should not have numbers placed under the image thumbnails as this image will be used in the digital catalogue after the event.

Entry Process continued...

Printed Images

- Printed images are presented on the day and will be judged individually on a light box, with judges assessing all club number 1 images first, then all the number 2 images, etc. It is not therefore necessary to 'panel' your images for judging. You may however, choose to 'panel' your images for display purposes to show your club's work to its best advantage. Judges will not see the panel layout prior to judging.
- Maximum mount size is 50cm x 40cm (20 x 16 inches). Images will be judged on a lightbox, so small images and mounts may be at a disadvantage.
- The system allows you to print labels with a barcode that you must place on the relevant physical image prior to presentation of your panel.
- After upload and completion of entry, you may re-enter the system again at any time prior to the closing date to print these barcodes (placed top right beside the trolley or cart icon). Clubs must place the printed barcode containing numbers and details for the relevant image on the bottom left of the back of the print. It is preferable to print the labels in draft mode so that the barcode does not smudge. Please do not place the label too close to the edge, or mark the barcode/obstruct it with tape as this may prevent the code being read.
- If at any point you change one of your images prior to submission you should re run the barcodes as the new image will have a new barcode.
- Please place the numbers one to eight on a separate label in the centre back of the print, along with any direction arrows 'upwards' (where required) to enable correct placement of prints back on the stand after judging.
- Prints should be securely mounted as they will be carried to and from the lightbox, but should not be mounted on block-board, chipboard or similar materials, or be presented in frames, with or without glass. Such prints will not be accepted.
- Clubs will present their eight mono images on the morning of the competition and place them on their assigned stands. The public will view your mono panel prior to judging.
- Clubs will remove their mono panels after judging and present their colour panels. Judging will proceed immediately, however, this panel will remain in place and can be viewed after judging for the remainder of the event.

4. Judging

Encouraging the highest standards in photography

- The competition will be judged by three qualified judges selected by the IPF Judges' Committee.
- The judges for the 2025 National Shield are Anne Cassidy FIPF FRPS, Judith Kimber MPAGB, ARPS and Richie Hatch AIPF.
- The IPF Competition Management System will be used to run and score the competition. Judges directly enter their score onto the system using a digital keypad.
- The print images will be viewed under appropriate lighting conditions in an imaging viewing lightbox.
- The judges will view the images in number order per club: All the number one images, all the number two images, etc.
- Judging will be anonymous in regard to author and club.
- Each judge will score the image out of five.
- Judges may not consult with each other until all three have submitted their scores. Judges may consult when adjudicating on tied images for awards.
- Prize-winning images will be chosen from the top scoring images in each category.
- All rounds of the competition will be judged live and in the public competition space.
- Results will be based on the aggregate scores given by all judges to each competing panel.
- In the event of a tie the award will be shared jointly.
- Winning club and individual awards will be announced at the awards ceremony. All results will be posted by email within one day and a digital catalogue of entered images will be available online.
- The judges' decisions are final, and no discussion of such decisions shall be entered into or entertained.
- It is not permissible to publicly dispute the judges' decisions or comments at any time during **or after** the competition.

5. General

- The Irish Photographic Federation retains the right to reproduce any image entered in the competition in connection with publicising or promoting the competition, the IPF or an affiliated club.
- Copyright of the images shall, at all times, remain with the respective authors. The IPF retains the right to store the images in the National Photographic Archive Collection and may use them to create on-line galleries or may display them on the IPF website.
- The IPF retains the right to consider any images entered in its competitions for use in international biennials.
- Any potential conflicts of interest will be managed as per the IPF Code of Conduct for Competitions available on the IPF website.
- The IPF Council's decision in all matters relating to the National Shield shall be final.



Calendar



Opening date for entries	Monday October 20th, 2025	6 PM
Closing date for entries	Sunday November 9th, 2025	10 PM
National Shield	Saturday November 15th, 2025	Barbican Centre Drogheda



Sponsored by:

Programme National Shield 2025	
9:00 – 9:30	Hanging mono prints
9:30 – 10:00	Viewing mono prints
10:00 – 11:30	Judging mono prints
11:30 – 12:00	Hanging colour prints
12:00 – 1:30	Judging Colour prints
1:30 onwards	Viewing Colour prints
1:30 – 2:30	Break for lunch
2:30	Results and presentation

